

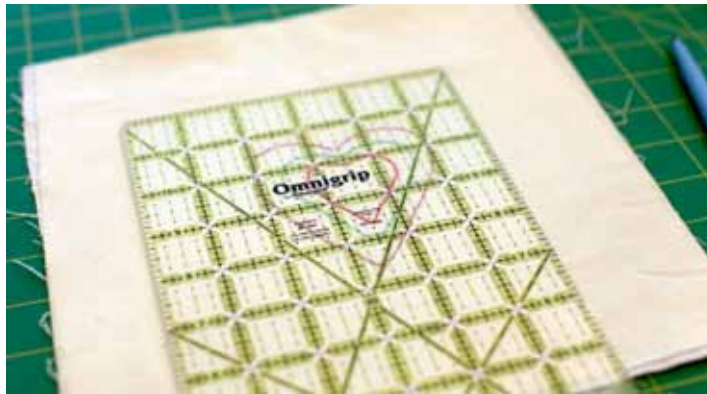


LET'S MAKE A PINCUSHION, PART TWO!

IN THIS LESSON YOU'LL BE USING THE SEWING MACHINE TO ASSEMBLE YOUR PINCUSHION!

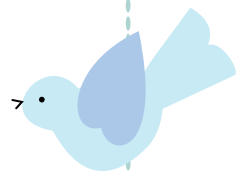
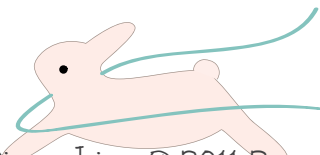
FIRST, TRIM THE EMBROIDERED SQUARE:

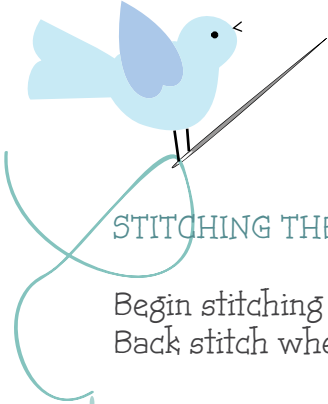
Ask an adult to help you with this. Place your ruler over the embroidered heart. Center the heart under the ruler and trim the embroidery to 5" x 5". Make sure its centered before you cut!



PIN FRONT AND BACK RIGHT SIDES TOGETHER:

Pin the backing fabric and embroidery squares right sides together. Using a pencil mark a 2" opening on one side as shown in the picture below.





STITCHING THE SQUARES TOGETHER:

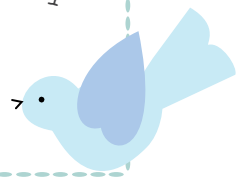
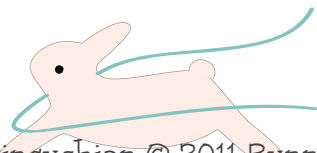
Begin stitching on one side at the bottom pencil mark. Stitch using a 1/4" seam allowance. Back stitch when you first start stitching.

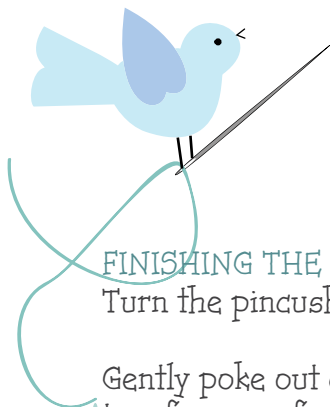


Keep stitching around all four sides stopping 1/4" before you come to a corner. It will help if you have mom mark the stopping point at the corner for you. Make sure your sewing machine needle is down in the fabric and then raise the foot. Turn the corner and lower the foot. Continue stitching down next side.



Stop stitching when you come to the top pencil mark. Back stitch again just like you did at the start and then remove the pincushion from the machine. Trim the threads. You should have an opening between the two pencil marks that aren't stitched closed. This is so you can turn your pincushion right side out.





FINISHING THE PINCUSHION:

Turn the pincushion right side out through the 2" opening on the side.

Gently poke out each corner from the inside of the pincushion with a point turner or the tip of a pair of scissors. Do not poke too hard or you will make a hole in the corner.

Give your pincushion a press and you'll be ready to fill it with ground walnut shells! We used a funnel to make it easier to pour in the walnut shells. If you don't have a funnel you can use a measuring cup. Don't fill it too full...leave a little room so you can easily pin the opening closed.



Pin the opening closed and stitch together by machine or hand.



Don't you love your new pincushion?

