

LET'S MAKE A PILLOW!

You'll need an adult to help you with this pillow. When you're done you'll have a personalized pillow all your own!

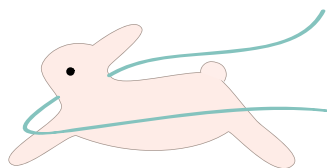


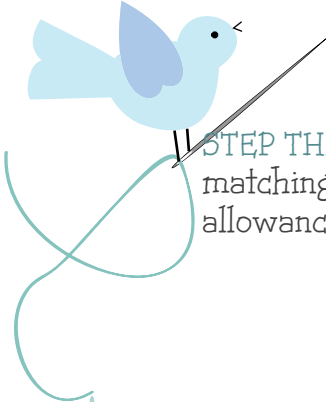
SUPPLIES:

- 4 squares of pretty fabric cut 5 ½" x 5 ½"
- 1 square fabric for back of pillow cut 10 ½" x 10 ½"
- Scrap of contrast fabric for initial
- Thread (for sewing machine AND for hand sewing the initial).
- Polyester Stuffing

STEP ONE: Choose two 5 ½" squares for the pillow top and pin right sides together. Stitch squares together using ¼" seam allowance. Press seam to the left.

STEP TWO: Place the other two 5 ½" squares right sides together and pin. Stitch the squares together using ¼" seam allowance. Press the seam to the right.





STEP THREE: Pin the top squares to the bottom squares right sides together, matching seam lines where they intersect. Stitch together using a $\frac{1}{4}$ " seam allowance. Press seam in one direction.



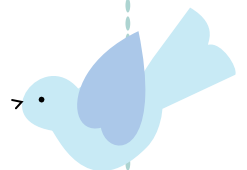
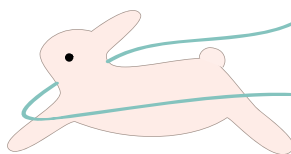
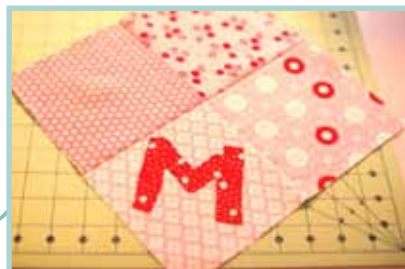
STEP FOUR: Cut out your initial from the paper pattern. Put the fabric you chose for your initial right side up on top of the paper pattern. Take both to a bright window and trace it onto the fabric using a fabric pencil or a water erasable marker.



STEP FIVE: Cut out your fabric initial on the traced line.



STEP SIX: Pin your initial to the right side of the pillow front. Make sure you have it placed on the pillow so it's not in the bottom seam allowance.





STEP SEVEN: Thread a needle with matching thread and stitch your initial to the pillow front using a large running stitch as shown in the photo below:



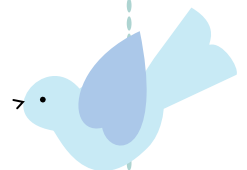
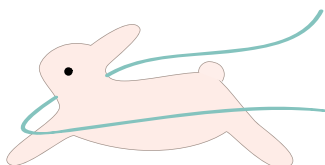
Knot thread on back of pillow by making a loop and pulling your thread through the loop. Tighten thread and clip ends.

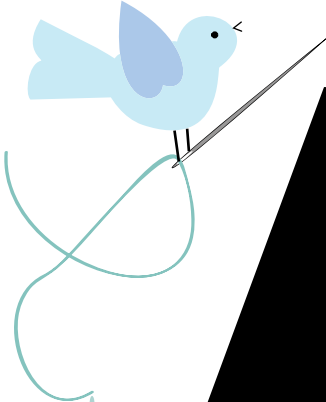
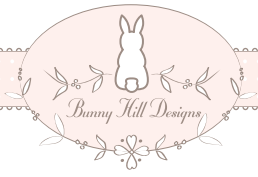


STEP EIGHT: Pin the pillow front to the pillow back right sides together. Stitch around all four sides using $\frac{1}{4}$ " seam allowance and leaving a 3" opening on one side for turning.



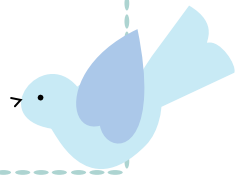
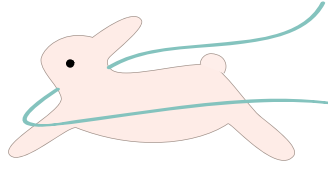
Turn pillow right side out and hand stitch opening closed. Ta Da! You have a new pillow!

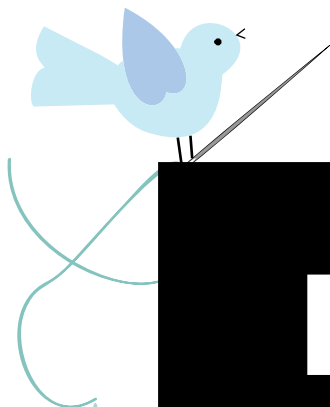
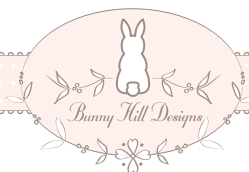




A B

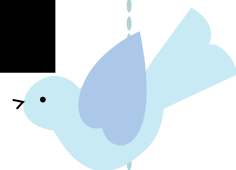
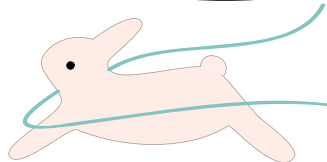
C D

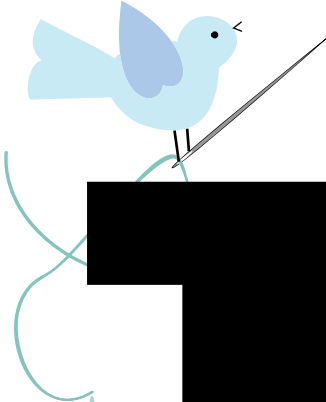
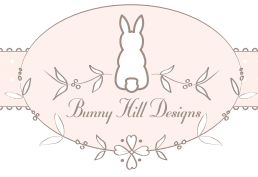




E F

G H



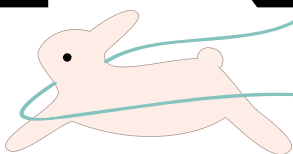


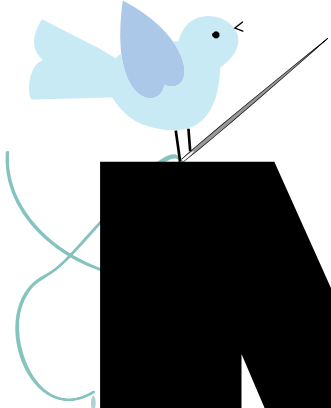
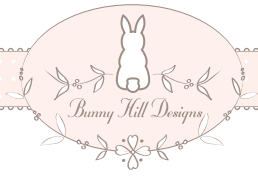
I

J

K

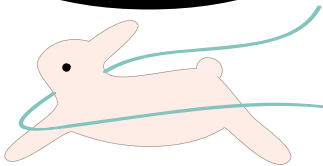
L

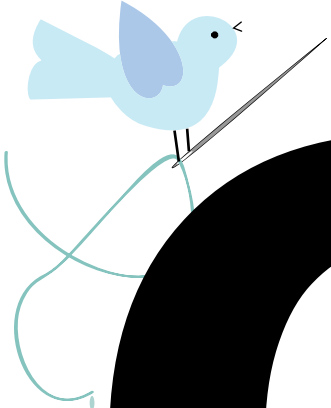
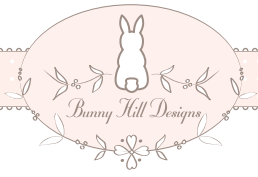




M M N

O P



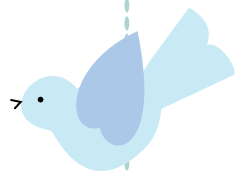
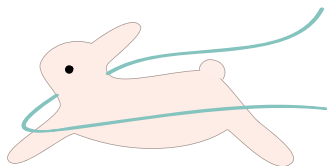


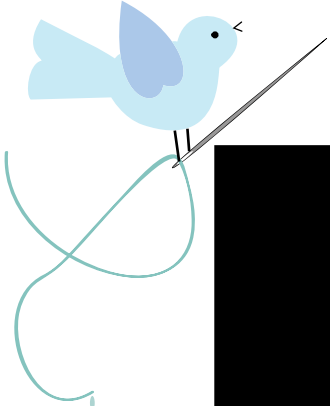
Q

R

S

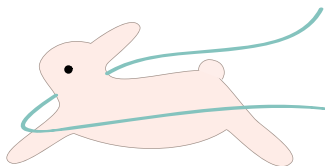
T

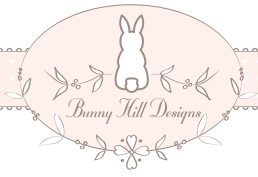




U W

W





XY

Z

